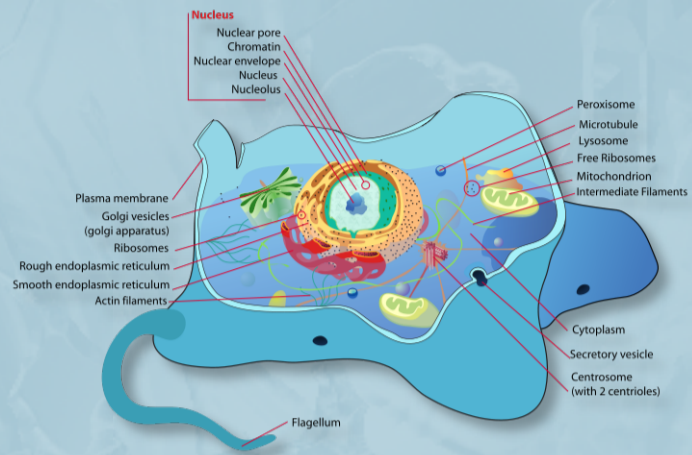
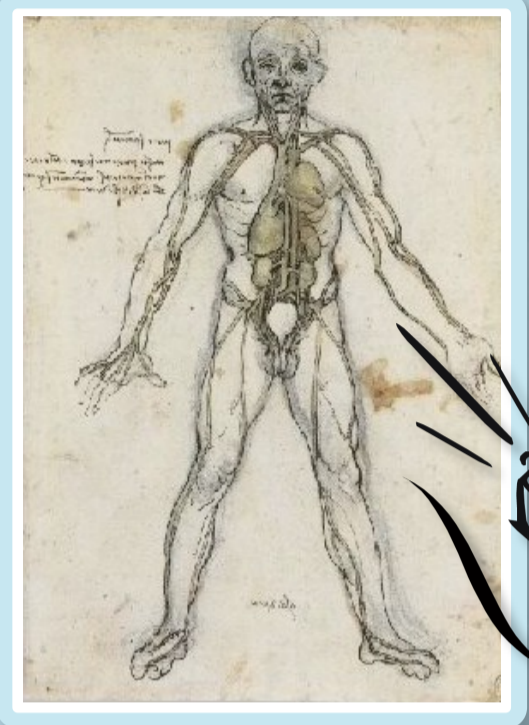
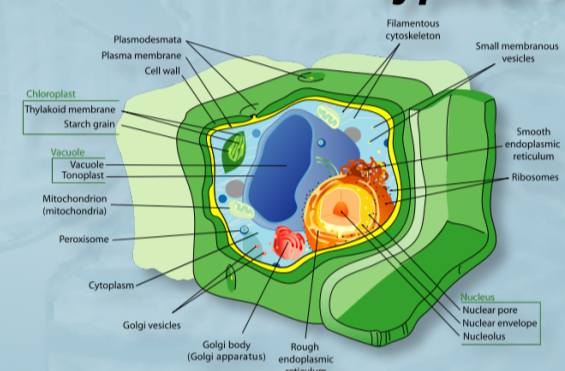


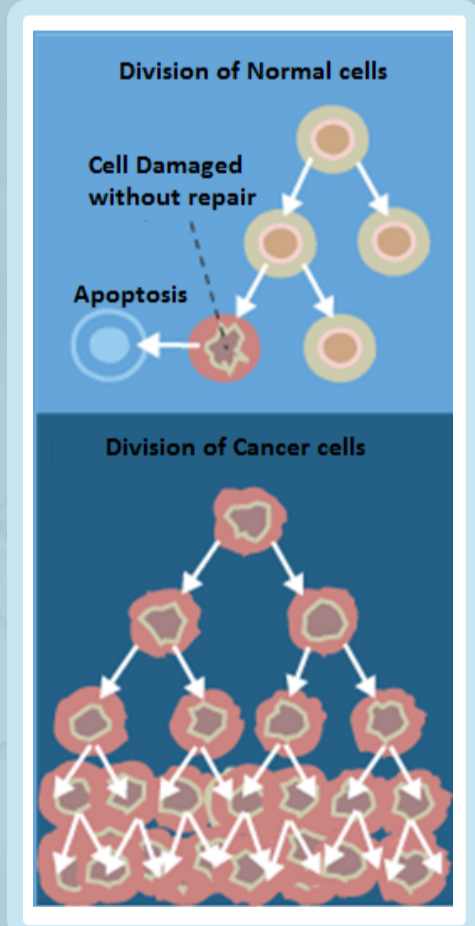
FOR ARTIFICIAL EMF TO AFFECT SO MANY ORGANELLES, CELL TYPES AND WHOLE TISSUES, SOMETHING UBIQUITOUS IS LIKELY INVOLVED. THE "BIG PICTURE" IS SUGGESTED IN OTHER MAPS AT OSCILLATORIUM.COM. THIS MAP OFFERS A SAMPLING OF CELL TYPES, TISSUES AND ORGANS WHERE ADVERSE EFFECTS HAVE BEEN OBSERVED.



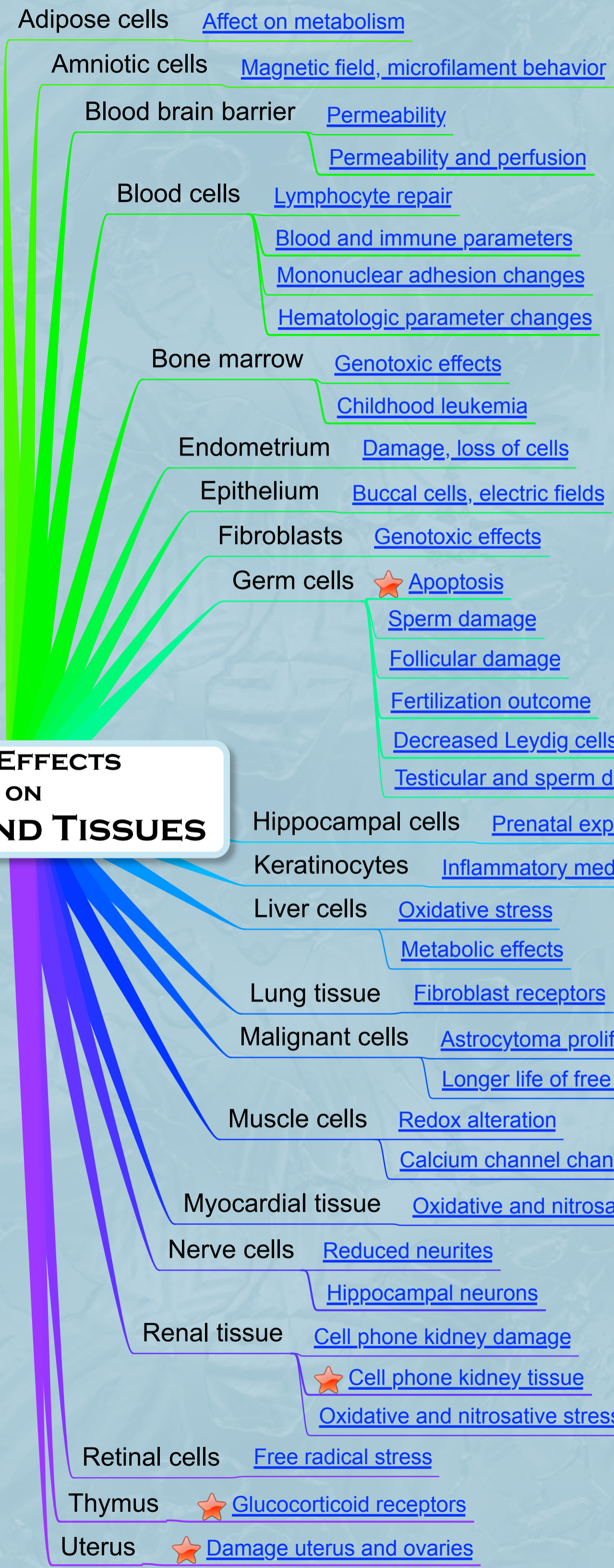
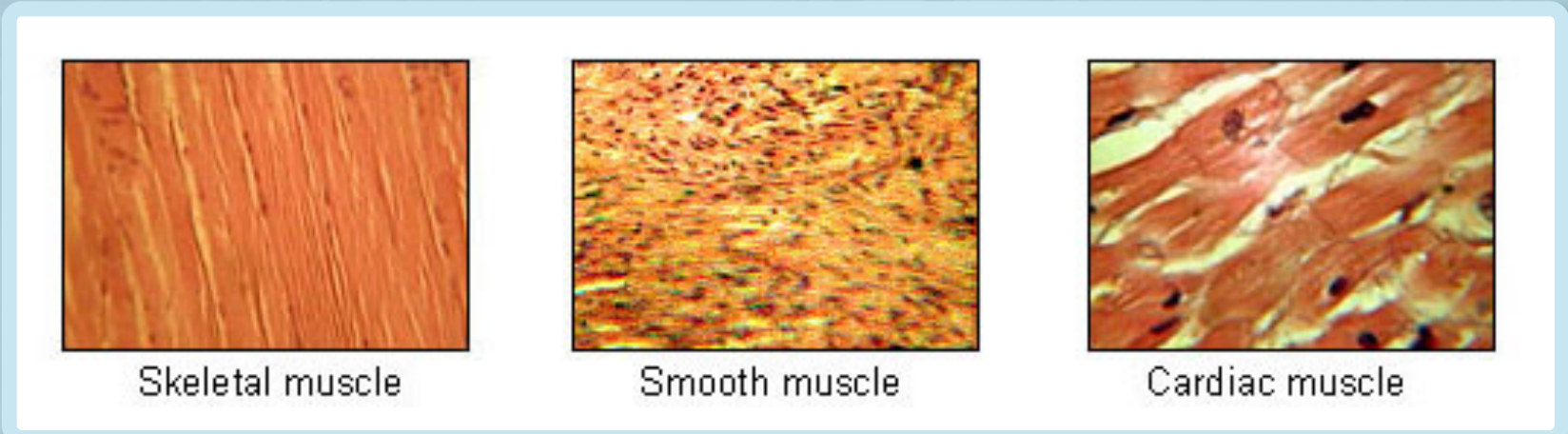
Typical Animal Cell



Typical Plant Cell



SEE OTHER MAPS:
[INTERFACIAL WATER AND EMF](#)
[INTRACELLULAR EFFECTS](#)
[BIO-EFFECTS OVERVIEW](#)
[PROPOSED MECHANISMS](#)
[INDEX OF CELLULAR EFFECTS](#)



Home: Oscillatorium
 Newest version: [this map](#)
 Date of this update: 11-14-15

IMPORTANT TISSUE EFFECTS:

- Damage to germ cells
- Loss of some cell types
- Cell behavior changes
- Malignant proliferation
- Changes in cell maturation
- Functional damage to viscera
- Pervasive visceral effects
- Tissues vary in sensitivity